



# INSTRUCTIONS

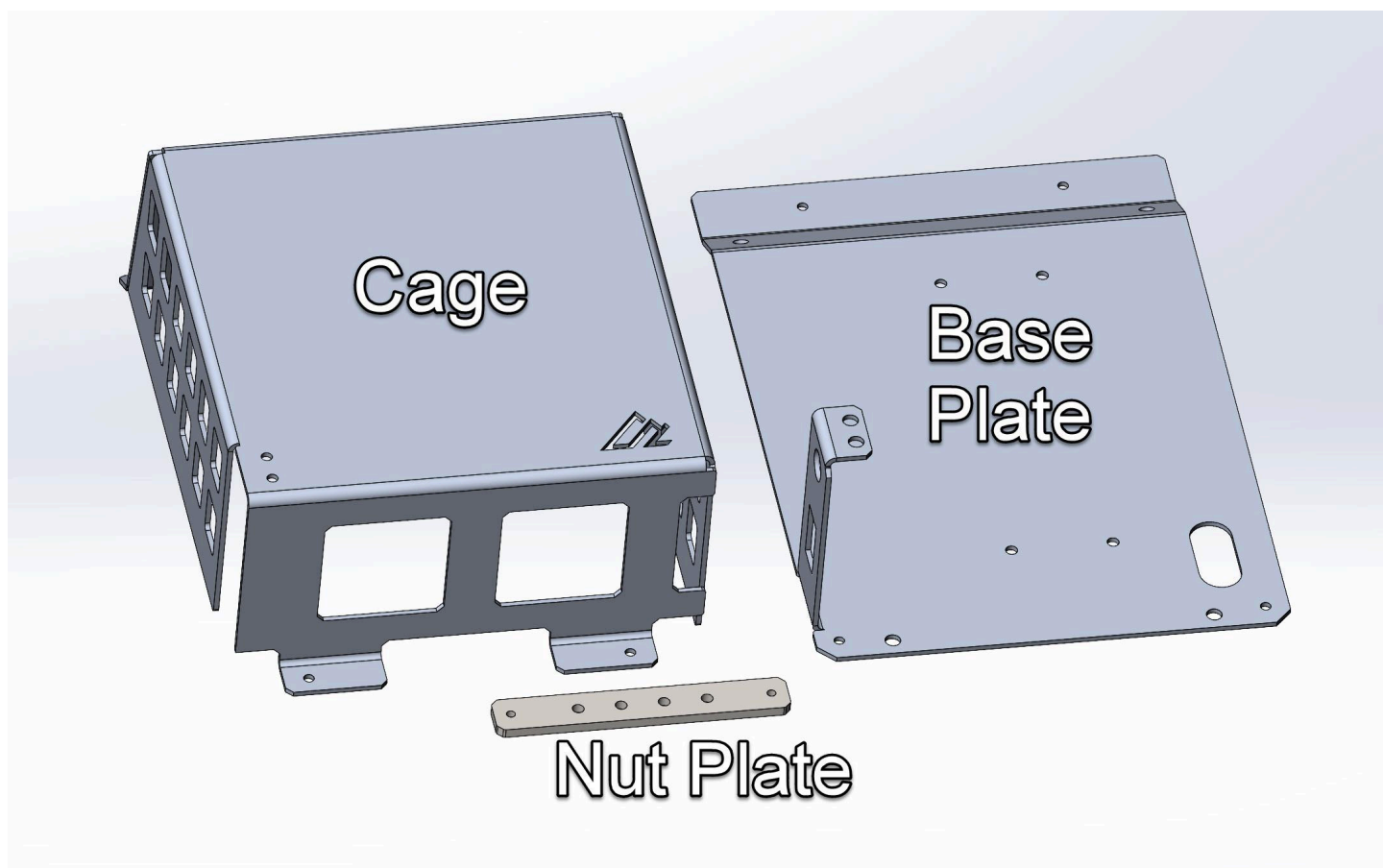
## ***JEEP GLADIATOR DUAL ARB COMPRESSOR MOUNT***

---

Thank you for purchasing your Jeep Gladiator Dual ARB Compressor Bed Mount from AAL! We greatly appreciate your trust in our company. We take that purchase and your commitment to us very seriously. If you have any questions along the way, please don't hesitate to give us a call at 385.202.4188.

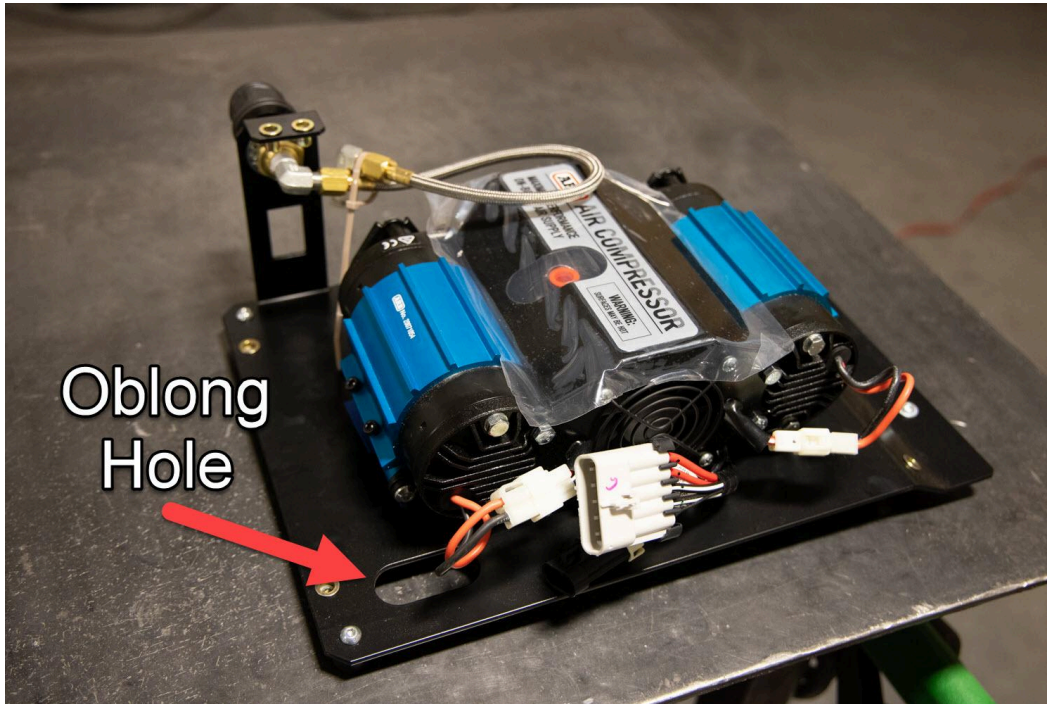
### **Step 1 - Lay Out All Components**

To prepare the installation, it's beneficial to familiarize yourself with the main components. The bracket ships assembled to keep everything safe. You can separate the pieces as shown below after you unpack the bracket.

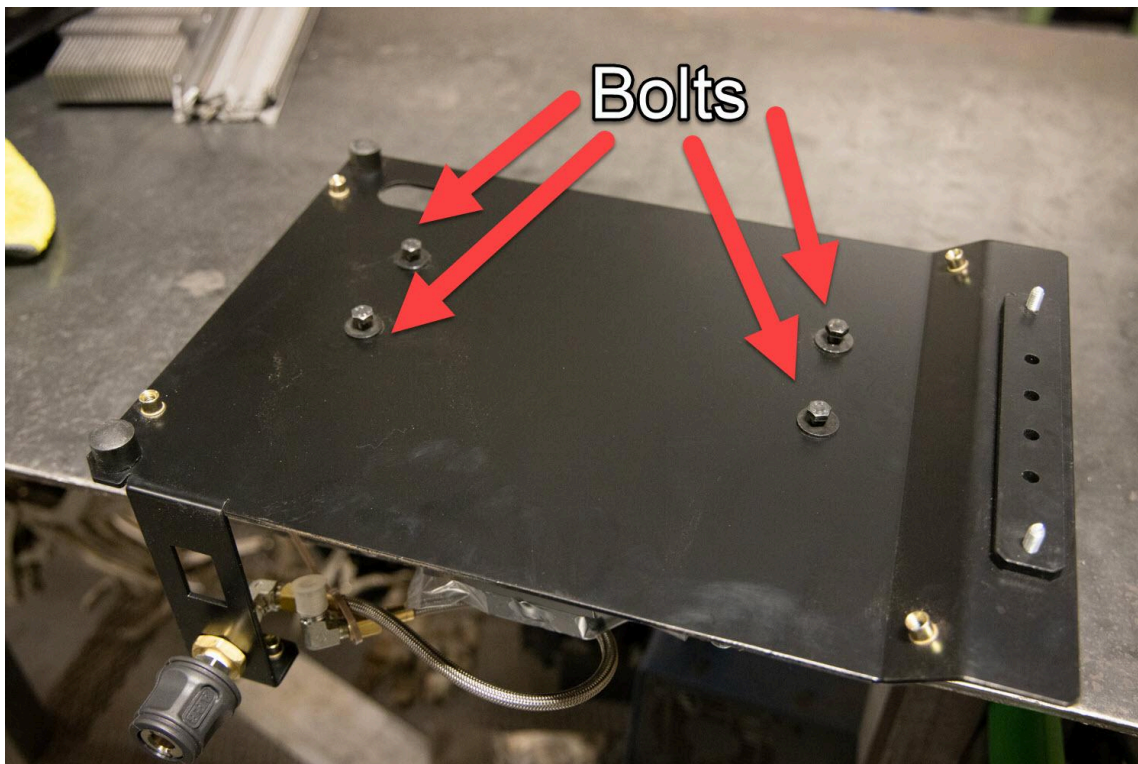


## Step 2 - Install Compressor Onto Base Plate

Using the hardware supplied with your ARB compressor, install the compressor onto the bracket as shown below. Pay attention to the location of the wire coming out of the back of the compressor. This needs to go on the side of the bracket that has the oblong hole. In a later step, that oblong hole will be where you feed the wire through.



### Bottom side of Bracket

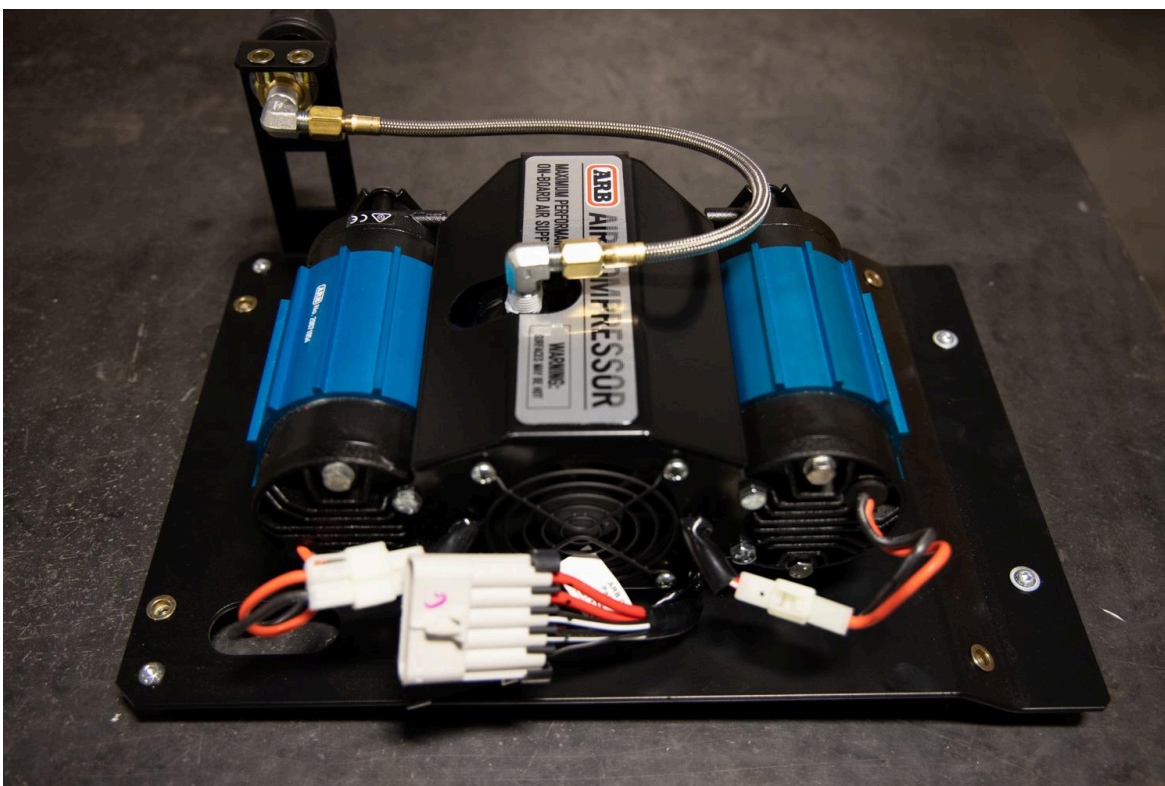


### Step 3 - Connect Braided Air Line

Remove the 90 degree fitting from the air line. Install that fitting into the output port of the compressor (see below). Install the NPT end (larger end) into the compressor with the provided thread tape. Tighten the fitting into the position shown below.



Then, connect the air line to the flared end of the 90 degree fitting like the photo below. Ensure all of the fittings are tight to prevent air leaks. The flared fittings do not require thread tape. Adding thread tape to the flared fittings will prevent a proper seal.



## Step 4 - Attach Bracket to the Bed of Truck

Insert the Nut Plate into the Mopar Bed Rail and align similar to the position in the photo below (driver's side). Once the nut plate is positioned, you can use the two mounting bolts to attach the bracket to the nut plate. It may be necessary to push the nut plate toward the bracket from inside the bed rail. Once the first bolt starts into the threads, this is no longer necessary. **Do not tighten the mounting bolts. Keep them very loose.**



## Step 5 - Mark and Drill Hole for Wiring

With the bracket positioned where you would like it, mark the bed side directly through the oblong hole in the bracket called out previously. This is best done with a silver marker or white grease pen. With the mounting bolts still very loose, slide the bracket out of the way to reveal access to the bedside where you marked it.

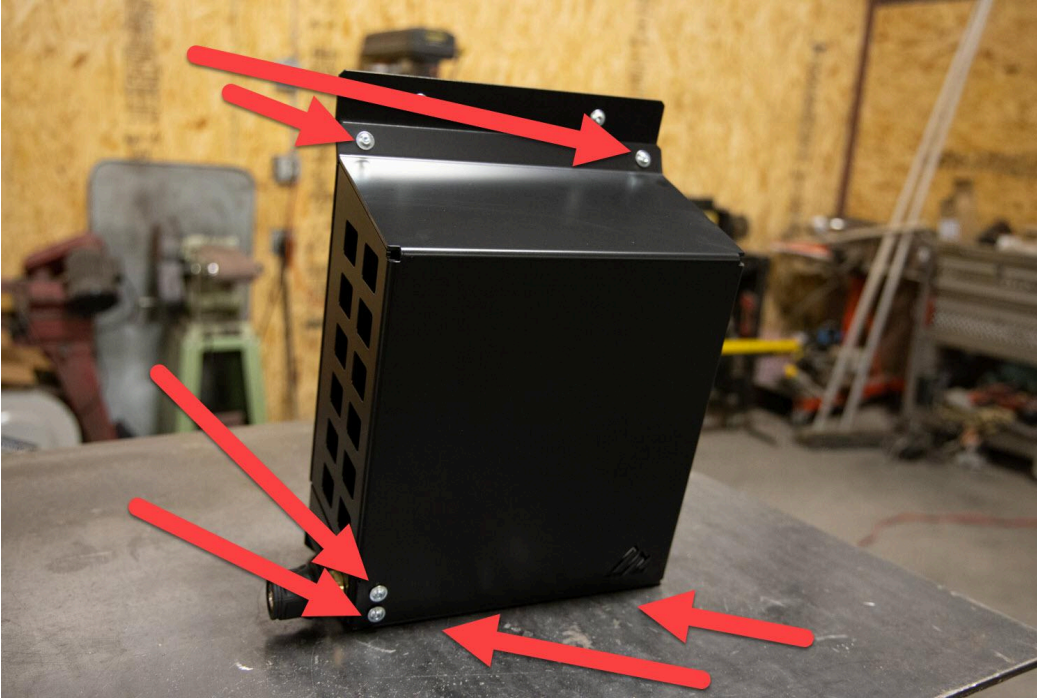
Drill and/or cut the hole in the bed for the wiring to come through. Please refer to the wiring instructions that come with your compressor for proper wiring. Keep your bracket slightly loose (to the bed rail) during the wiring process so you can reposition the bracket if necessary to keep stress off of the wiring.

If routing wire through the bedside, it may be necessary to use a rubber grommet around the cutout to prevent the bed sheet metal from cutting into your wire. \*Grommet not included due to multiple different wiring techniques applicable.

## Step 6 - Final Installation

After your wiring is completed, tighten the two top mounting bolts, securing the bracket to the bed. Then, attach the cage to the bracket as shown.

There are (6) M6 bolts that hold the cage onto the base plate, identified with red arrows below. The bottom bolts are best accessed with a long extension.



### Installed Compressor Bracket



**\*Note - the photo above is a previous version without the two mounting bolts near the coupler.**

Thank you again for purchasing from American Adventure Lab. We greatly appreciate your support.

Please let us know what you think about the product and installation process.

If you are so inclined, please share your installation photos with us online:

- Facebook - <https://www.facebook.com/AmericanAdventureLab>
- Instagram - <https://instagram.com/americanadventurelab>



For questions please email us at: [Support@erp.Adventurelab.com](mailto:Support@erp.Adventurelab.com)